

The future of handwriting recognition

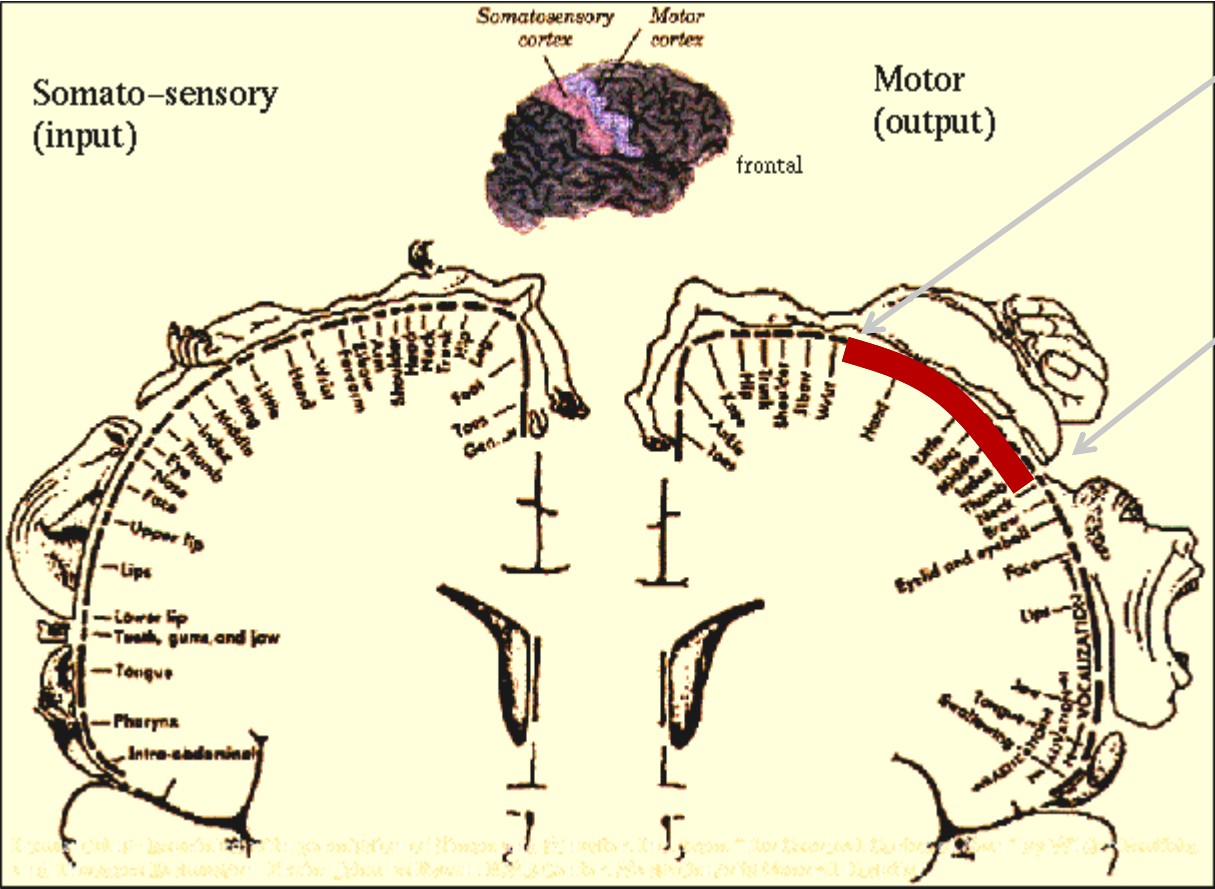
Lambert Schomaker – chair

Introductory slides for the panel session at the International Conference on Frontiers in Handwriting Recognition, Bari, 18-9-2012. *Post-hoc annotated.*

Handwriting

- › An acquired skill
- › For persistent storage of information;
 - Directed at other persons;
 - Directed at self;
- › Exploiting the biomechanical versatility of the writing hand;
- › Exploiting the fact that the brain has reserved many neurons to the hand system.

Cortical regions devoted to movement



**Hand
area**

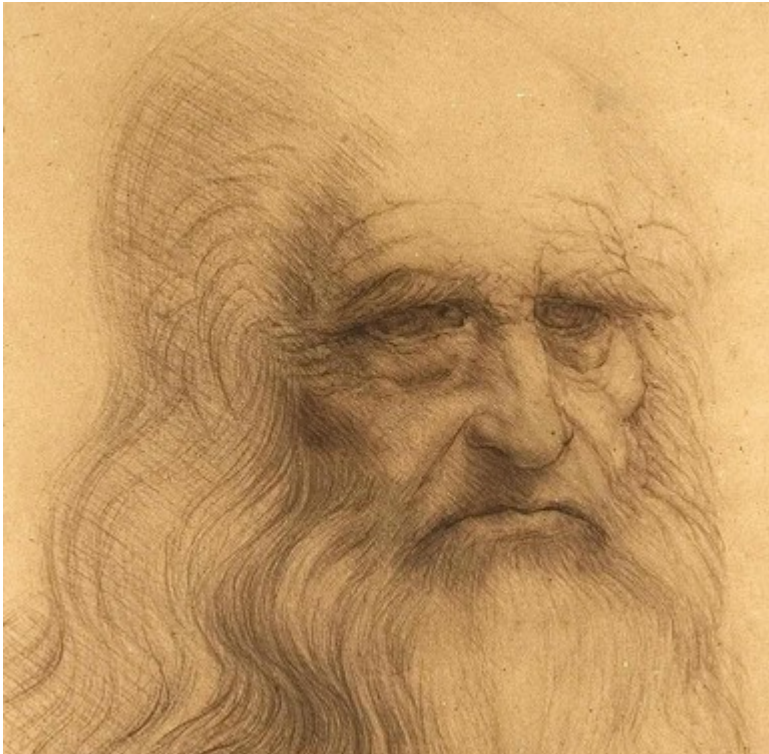
After the classical figure by:
Penfield, W. & Rasmussen, T.
(1950). *The Cerebral Cortex of
Man*. Macmillan, New York.

ICFHR 2012 – panel discussion

Writing ...

and

drawing skills



i.e., many bits !!

Therefore:

- › It would not be wise to neglect the existing advantage of a high-resolution positional control system, with a high signal to noise ratio:
- › The Writing/Drawing Hand

Trends

- › We write less and less
- › We swipe more and more on tablets
- › But stylus-based systems keep coming
- › And historical documents are not walking away
- › The need for accurate interactive input increases on small devices

Issue 1. Science

- › Is anything fundamentally solved yet?
- › Are we guilty of ‘experimental programming’ ?
(Edsger Dijkstra)
- › Is the base literature actually read?
- › Do *you* know how digitizers and CCDs work?
- › Linear pipeline factory
vs dynamic constraint satisfaction
(read: **existing insights are not used**)

Issue 2. Image processing

- › Foreground / background separation solved?
- › Why do we need that anyway?
- › Who uses color features?
- › Layout modeling solved?

Issue 3. The overfit

```
i=1;
while(true)
{
    pick_one_book(number=i, style==S,language==L);
    hire_one_PhD();
    wait_four_years();
    → 95% accuracy;
    ++i;
}
```

- no generalization in sight?
- highly particular slave labor ?

Issue 4. Writer identification

- › Is getting better and better, forensic and paleographic
- › But the users want likelihood ratios
- › Do you trust your LR?
- › What is the reference population?

Issue 5. Language modeling

- › Corpora are contemporary texts, newspapers, novels
- › How to bootstrap language models for ‘new’ script styles or old manuscripts?
- › How can the system know the applicable corpus model?

Issue 6. Databases

- › - galore!
- › Multilingual script styles, periods etc.
- › How to use them in a meaningful way?
- › Can we mix them without problem?
- › Benchmark organization

Issue 7: Industry and hardware

- › Wright brothers: 1st motorized flight 1903
- › War employment of airplanes 1914-1918
- › 1920^{ies} – worldwide airplane manufacturing and airlines starting to operate (KLM, 1920)
- › HWR: 1966 – uppercase recognition for FORTRAN code sheets
- › 2012 ? Where is our industry, apart from postal automation?

Groner, G.F. (1966) "Real-Time Recognition of Handprinted Text", Memorandum RM-5016-ARPA, The Rand Corporation, October 1966.

Handwriting recognition on RAND tablet: curvature feature, corner detection, endpoints, height, width, center, aspect ratio, position relative to writing baseline (on screen)

Segmentation in handwriting by X overlap, centers, spatial separation

Performance: 20 minutes user practice, information training: **82% to 92%**, **81% to 93%**, **90% to 96%**, depending on user training/familiarity

User-interface for handwriting recognition/editing of FORTRAN coding forms
53 symbols,

Sampling tablet **at 250 Hz**. Multiple stroke characters were order free

Hardware? Newton, Crosspad, Tablet-PC

Apple iPad (?),

Samsung

Galaxy Note 10.1



will new devices be good enough?

Issues

1. Science
2. Image processing
3. Writer identification
4. Language modeling
5. Databases
6. Industry & hardware

The panel

- › Prof. dr. C.Y. Suen
- › Prof. dr. B.B. Chaudhuri
- › Prof. dr. R. Plamondon
- › Prof. dr. S. Impedovo
- › Prof. dr. S. Srihari
- › Dr. Volker Märgner
- › Dr. M. Liwicki

(discussion)

- › *The public selected the item “language modeling”*
- › *The panel selected the item “science”*

- › *Most elucidating outcome:*
 - *Few, if none of the participants was willing to claim that linguistic modeling helped more than a few percentage points*
 - *With the exception of address reading, but even there, problems exist. LS. October 2012.*